

High Definition LCD DVD Player

Operating Instructions

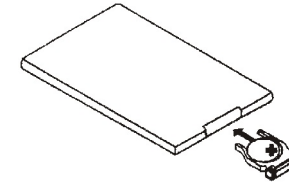


Before operating this set, please read these instructions completely

Contents

Notice	2-3
Installation, Repairing and Suitable Disks	4
Features	5
Function Instructions of Control and Position	6
Basic operation	7-9
Function and Instructions of Remote Controller	10-14
Wiring Diagram	15
Installation	16
Maintenance	17-18

Insert the cell into the remote controller.

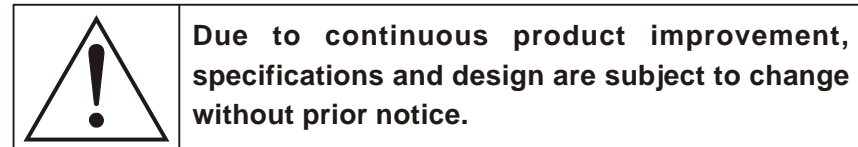


Note:

- ☆ Keep lithium cell away from the place children could reach. If there is a child swallow it for careless, please take him to hospital.
- ☆ Using dry cloth to clean the cell to ensure good connection.
- ☆ Please confirm the polarity of the cell when insert it.
- ☆ Don't grip the cell with metal pliers, or there will be short circuit.

Warning:

With inappropriate operation, the cell would explode.
The cell could not be charged, disassembled or fired.



Due to continuous product improvement, specifications and design are subject to change without prior notice.

Maintenance:

1. Renew of fuse

When you renew fuse, you must confirm that amperage of used fuse is suitable. If the fuse is burn-out, please check connection of power supply and renew fuse. If the renewed fuse is burn-out again, it should be a problem inside. In this case, please consult a distributor.

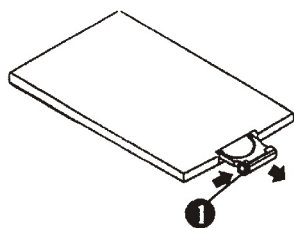
Warning:

Please don't use the fuse that its specified amperage exceeds that of this system. otherwise system would be broken.

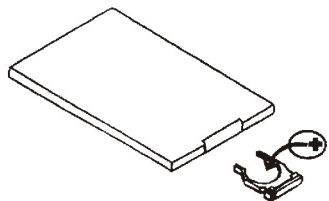
2. Renew of lithium cell

When the operation distance of remote controller become short or it has no action, please renew lithium cell of Cr2025. Please identify the polarity of the cell, operation is as follows:

- 1.1 While you are pressing plug, you should pull out lightly the cell foundation at the same time.



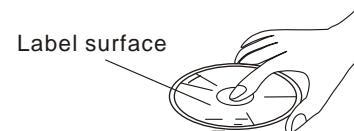
- 1.2 Place the button cell in it with the mark "+" upward.



17

Notice

1. Only be suitable for power supply DC 12V and the negative lead to earth. Before Install this set, please confirm whether your car is earthed.
2. According to Installation instructions for connecting. If connection is not correct, it will cause failure, or damage car's electrical system.
3. Down-lead of loudspeaker must be connected to terminal of loudhailer. Don't connect to car body or other loudhailer.
4. You can't turn on it until confirm all connection is right.
5. When change burned-out fuse, Please replace it with a new one.
6. Please do not plug up the airway or radiator, in order to avoidcausing the fire for over heat.
7. Do not alter system. otherwise, quite probably lead to contingency.
8. Please park the car in the safe place, before do any operation that will effect driving.
9. Please do not work under high temperature or low temperature. Please confirm the inside temperature range is -10°C to 60°C, before turn on power.
10. When play disc, in order to get the best picture and sound affection. Please note following terms when play it:
 - ① Fetch edge of disc, in order to keep it clean.



2

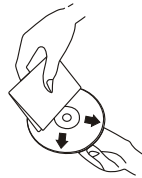
② Please do not use disc with mucilage glue(or ink).



③ Please do not use disc that is pasted with label. When the label slough, it will leave mucilage glue on it. (As following)



④ When wipe disc, please use special soft cloth, from centre to edge.



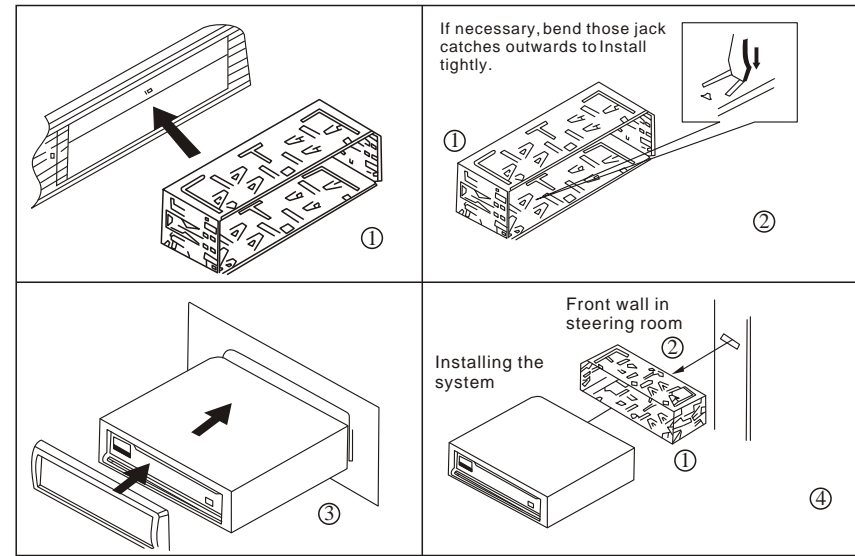
11. When the picture quality will be affected for humidity, please switch on the power (do not put disc in it), and let the system run one to two hours in order to evaporate.

12. Please do not play damaged or anamorphic disc.

13. When the disc can not be put into, please do not push it.

14. DVD player is a kind of laser product. please do not open it by yourself in order to avoid danger.

Installation of the system



Method of installation (2):

Install the system using screw holes in both sides of main system.

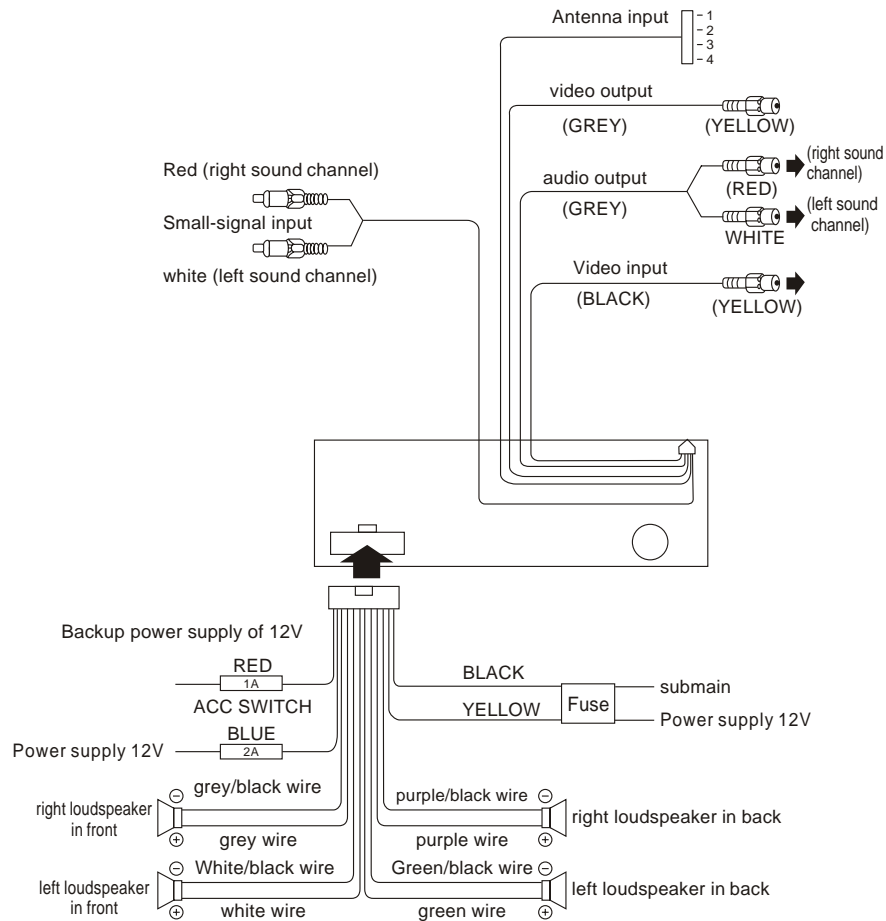
1. Take apart hooks from the two sides.

2. Align screw hole of driver's support setting and screw hole of the main system, and lock screw, and then install it in the car.

REMARK:

The method of installation do not use the tools of glue frame, hook and half-high cabinet frame.

Diagram of output wiring



Installation and Repairing:

1. Install it by professional. When installing it, please inform the dealer.
2. Do not maintain it by yourself. If need be repaired, please inform dealer, do it by professional.

Suitable Disks:

Type	Icon	Content	Size	Play Time
DVD		Picture and Sound	8/12cm	About 4.5 hours (single-sided and double layer)
				About 2.0 hours (single-sided and single deck)
VCD		Picture and Sound	8/12cm	About 74 minutes
CD		Sound	8/12cm	About 74 minutes
MP3		Sound	8/12cm	About 600 minutes

Features:

1. Slot-in DVD player.
2. 4CH surround stereo.
3. Built-in 4x45W amplifier.
4. Chinese & English languages are optional.
5. Built-in DOLBY decoder.
6. Offer many kind of angle, for instance: Profile, Panorama
7. Display mode may be adjusted to 4:3 or 16:9. It is suitable to different kind of TV screen.
8. Others: ZOOM, BRIEF PLAY, REPEAT PLAY, FF/FR, PLAY SLOWLY, MEMORY PLAY, PROGRAM PLAY AND SO ON.

26. VOL+

Press this key to increase volume.

27. VOL-

Press this key to decrease volume.

28. 10+

When need two digits number, press this key.

29. PBC

Press this key to turn off or turn on the main menu of VCD/DVD.

30. TFT MENU

Press this key, the display enter into TFT menu system, Press the direction keys to select the menu item, press VOL+ or VOL- to adjust.

Set up of the menu

When you press the setup key, menu and sub-menu set would be displayed on the display screen. At this time, you can choose your wanted item with direction key. When the suitable item is chosen, you can press enter key to enter.

17. DVD MENU

Press this key to display main menu of DVD disc, press it again to play.

18. PROGRAM

Under CD/MP3/VCD mode, turn off PBC function to play in program.

19. AUDIO

When a disc is playing, press this key to shift different languages and audio systems. Under CD/VCD mode, press it to shift left and right sound channel or stereo sound channel.

20. ANGLE

Under DVD mode, press this key to change play angle.

21. MUTE

Press this key to cancel volume electrical level output, press it again to recover.

22. ZOOM

Press this key to zoom picture.

23. CH+

Under DVD mode, press this key to move cursor upward, downward, leftward and rightward to choose item in menu set by system, and press enter key to enter into chosen item.

24. ENTER

Press this key to enter chosen item.

25. SETUP

Under DVD mode, press this key to shift from different setup items.

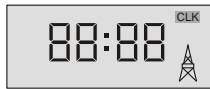
I. Function Instructions of Control and Position



- | | |
|-------------------------------|---------------------------|
| 1. Open key | 11. Auto search (TV/FM) |
| 2. Previous Song, CH- | 12. Stop |
| 3. Next Song, CH+ | 13. FR |
| 4. Clock - | 14. FF |
| 5. Clock adjustment | 15. Play/Pause |
| 6. Clock + | 16. Remote control window |
| 7. Power switch | 17. Eject |
| 8. CD window | 18. Volume - |
| 9. Mode change (DVD/AV/FM/TV) | 19. Menu |
| 10. Mute | 20. Volume + |
| | 21. LCD display |

II. Basic operation

After finishing the wire connection, the unit enters standby states, the LCD on the front panel will display:



Clock display

Press the C-, CLK, C+ buttons to adjust time.

1. Press ① key to open the display screen, and then press ⑦ key to turn on power (indicator is blue when the system turns on, while it is red when the system turns off), at this time, press ⑨ key to change the modes (DVD/AV/FM/TV).

A. On the position of DVD, LCD display:



- a. Press the ⑰ key, it will display:

Bright
Contrast
Color
Scale (16:9/4:3)
Rotate
Language (Chinese/English)
Reset

- b. Press the ⑰ key twice continuously, it will display:

VOL
BASS
TRE
BAL
FAD
LOUD

B. On the position of AV, LCD display:

9. STOP

While it is playing, press this key once to pause, if you want to play, you should press play key. In pause of segment, you press it again to stop. If you want to play, you should press play key again, play is from start to end.

10. SLOW

When it is playing, press this key to play slow, you could choose from 1/2X to 1/32.

11. DISP

Press this key to display play state, time, sound channel and so on.

12. key of song choice (1-0 numeric key)

When PBC turns off, you could press keys from 1 to 0 to choose song.

13. REPEAT

Press this key once to repeat a segment, at this time, display screen displays segment repeat. Press this key again to play title again, at this time, display screen displays title repeat, press this key to turn off the system.

※ When MP3 disc is playing, it repeats whole disc, single song and catalogue.

14. TITLE

Under DVD mode, press this key to return top menu.

15. SUBTITLE

Under DVD mode, press this key to shift language on screen.

16. RETURN

Under play mode, press this key to return play position to play from main menu.

Remote controller and its basic operation

1. POWER

Press this key to turn on or turn off the power supply of host system.

2. EJECT

While CD/MP3/VCD/DVD is playing, press this key to eject disc.

3. MODE

Press this key to select the modes, AV, DVD, FM, TV.

4. PLAY/PAUSE

While playing CD/MP3/VCD/DVD, press this key to pause, press it again to play.

5. FF

When DVD disc is playing, press this key to play forward fast, you can choose from 2X to 16X. When VCD disc is playing, press this key to play forward fast, you can choose from 2X to 8X.

6. Next (next song)

While CD/MP3/VCD/DVD is playing, press this key to choose next song.

7. BACK (previous song)

While CD/MP3/VCD/DVD is playing, press this key to choose previous song.

8. FR

While DVD disc is playing, press this key to play fast return, press this key to fast return, you can choose from 2X to 16X. While VCD disc is playing, press this key to play fast return, you can choose from 2X to 8X.



Press the C-, CLK, C+ buttons to adjust time.

Clock display

C. On the position of FM Radio, LCD display:



Selected Channel

Channel frequency

a. Press the Menu key, it will display:

Auto Search
Manual Search
FRQ Fine
Channel
Skip
FRQ
Save

b. Press the Menu key twice continuously, it will display:

VOL
BASS
TRE
BAL
FAD
LOUD

D. On the position of TV, LCD display:



Selected Channel

a. Press the Menu key, it will display:

Bright
Contrast
Color
Scale (16:9/4:3)
Rotate
Language (Chinese/English)
Reset

- b. Press the Menu key twice continuously, it will display:
 Auto Search
 Manual Search
 FRQ Fine
 Channel
 Channel-Skip
 System mode (TV System selection)
 FRQ band (H. L. U.)
- c. Press the Menu key three times continuously, it will display:
 VOL
 BASS
 TRE
 BAL
 FAD
 LOUD
- Note: TV system selection
 PAL/5.5M
 PAL/6.0M
 PAL/6.5M
 NTSC/4.5M

Press ② ③ key to select menu, and use ⑱ ⑳ key to adjust all kinds of menus.

2. Press ② ③ key in the front board, select disc previous (CH-) or next item (CH+).
3. Press ⑱ ⑳ key to increase and decrease volume.
4. Press ⑮ to Pause. Press it again to play.
5. Press ⑰ to eject the disc. If disc eject in five minutes, It will be auto-sucked in to play.

DVD LCD REMOTE CONTROLLER

